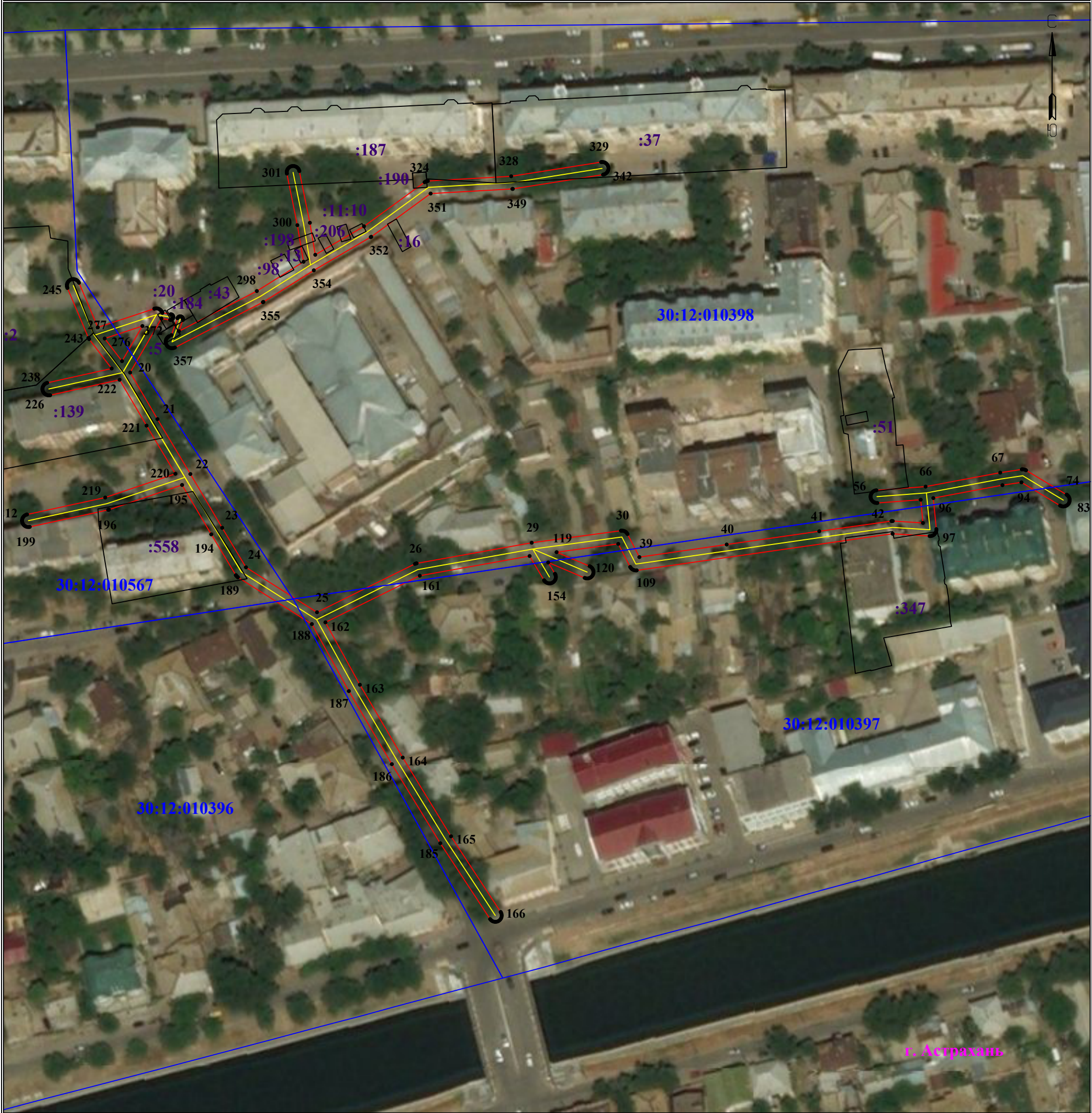


Схема расположения границ публичного сервитута  
для размещения объекта  
ЛЭП-0,4 кВ ТП-227 ф.128 ПС Северная  
(наименование объекта землеустройства)  
План границ объекта землеустройства



Используемые условные знаки и обозначения:

Масштаб 1:1338

Лист 1 из 2

- 1 - обозначение характерной точки границы устанавливаемой зоны публичного сервитута
- - границы земельных участков, попадающих в зону публичного сервитута
- - граница кадастрового квартала
- 30:12:000000 - номер кадастрового квартала
- - граница устанавливаемой зоны публичного сервитута
- - ось линии
- :113 - кадастровый номер ЗУ
- - граница населенного пункта
- г. Астрахань - наименование субъекта, МО, населенного пункта



ОПИСАНИЕ МЕСТОПОЛОЖЕНИЯ ГРАНИЦ

ЛЭП-0,4 кВ ТП-227 ф.128 ПС Северная

| Каталог координат                            |               |            |
|--|---------------|------------|
| Площадь зоны публичного сервитута 4 064 кв.м |               |            |
| Обозначение<br>характерных<br>точек границ   | Координаты, м |            |
|  | Х             | У          |
| 1  | 2             | 3          |
| 1  | 420437.89     | 2221438.82 |
| 2  | 420437.81     | 2221439.08 |
| 3  | 420437.72     | 2221439.23 |
| 4  | 420437.61     | 2221439.37 |
| 5  | 420437.48     | 2221439.48 |
| 6  | 420437.33     | 2221439.57 |
| 7  | 420437.16     | 2221439.63 |
| 8  | 420436.99     | 2221439.66 |
| 9  | 420436.82     | 2221439.66 |
| 10   | 420436.64     | 2221439.63 |
| 11   | 420436.48     | 2221439.57 |
| 12   | 420436.33     | 2221439.48 |
| 13   | 420436.2      | 2221439.37 |
| 14   | 420436.08     | 2221439.23 |
| 15   | 420436        | 2221439.08 |
| 16   | 420435.94     | 2221438.92 |
| 17   | 420435.91     | 2221438.75 |
| 18   | 420435.91     | 2221438.57 |
| 19   | 420436.4      | 2221435.57 |
| 20   | 420417.7      | 2221424.74 |
| 21   | 420401.58     | 2221434.2  |
| 22   | 420382.57     | 2221445.58 |
| 23   | 420363.96     | 2221456.58 |
| 24   | 420350.28     | 2221464.81 |
| 25   | 420334.71     | 2221489.38 |
| 26   | 420351.47     | 2221523.25 |
| 27   | 420351.62     | 2221523.66 |
| 28   | 420351.66     | 2221523.84 |
| 29   | 420358.79     | 2221563.63 |
| 30   | 420362.97     | 2221594.5  |
| 31   | 420362.98     | 2221594.61 |
| 32   | 420362.98     | 2221594.99 |
| 33   | 420362.91     | 2221595.37 |
| 34   | 420362.78     | 2221595.73 |
| 35   | 420362.59     | 2221596.06 |
| 36   | 420362.35     | 2221596.35 |
| 37   | 420362.05     | 2221596.6  |
| 38   | 420361.8      | 2221596.75 |
| 39   | 420353.82     | 2221600.87 |
| 40   | 420358.18     | 2221631.06 |
| 41   | 420362.77     | 2221663.08 |
| 42   | 420366.29     | 2221688.05 |
| 43   | 420366.3      | 2221688.17 |
| 44   | 420366.3      | 2221688.5  |
| 45   | 420365.65     | 2221698.95 |
| 46   | 420373.68     | 2221698.16 |
| 47   | 420372.56     | 2221683.19 |
| 48   | 420372.56     | 2221682.84 |
| 49   | 420372.63     | 2221682.46 |
| 50   | 420372.76     | 2221682.1  |
| 51   | 420372.95     | 2221681.77 |
| 52   | 420373.2      | 2221681.47 |
| 53   | 420373.49     | 2221681.23 |
| 54   | 420373.82     | 2221681.03 |
| 55   | 420374.18     | 2221680.9  |
| 56   | 420374.56     | 2221680.84 |
| 57   | 420374.94     | 2221680.84 |
| 58   | 420375.32     | 2221680.9  |
| 59   | 420375.68     | 2221681.03 |
| 60   | 420376.01     | 2221681.23 |
| 61   | 420376.31     | 2221681.47 |
| 62   | 420376.55     | 2221681.77 |
| 63   | 420376.75     | 2221682.1  |
| 64   | 420376.88     | 2221682.46 |
| 65   | 420376.94     | 2221682.84 |
| 66   | 420378.22     | 2221699.85 |
| 67   | 420383.05     | 2221725.67 |
| 68   | 420384.17     | 2221733.14 |
| 69   | 420384.18     | 2221733.28 |
| 70   | 420384.18     | 2221733.66 |
| 71   | 420384.11     | 2221734.04 |
| 72   | 420383.98     | 2221734.4  |
| 73   | 420383.87     | 2221734.6  |
| 74   | 420375.44     | 2221748.62 |
| 75   | 420375.35     | 2221748.75 |
| 76   | 420375.11     | 2221749.04 |
| 77   | 420374.81     | 2221749.29 |
| 78   | 420374.48     | 2221749.48 |
| 79   | 420374.12     | 2221749.61 |
| 80   | 420373.74     | 2221749.68 |
| 81   | 420373.36     | 2221749.68 |
| 82   | 420372.98     | 2221749.61 |
| 83   | 420372.62     | 2221749.48 |
| 84   | 420372.29     | 2221749.29 |
| 85   | 420371.99     | 2221749.04 |
| 86   | 420371.75     | 2221748.75 |
| 87   | 420371.56     | 2221748.42 |
| 88   | 420371.43     | 2221748.06 |
| 89   | 420371.36     | 2221747.68 |
| 90   | 420371.36     | 2221747.3  |

| 1   | 2         | 3          |
|-----|-----------|------------|
| 91  | 420371.43 | 2221746.92 |
| 92  | 420371.56 | 2221746.56 |
| 93  | 420371.67 | 2221746.36 |
| 94  | 420379.7  | 2221733.01 |
| 95  | 420378.72 | 2221726.44 |
| 96  | 420374.25 | 2221702.52 |
| 97  | 420363.51 | 2221703.58 |
| 98  | 420363.1  | 2221703.58 |
| 99  | 420362.72 | 2221703.52 |
| 100 | 420362.36 | 2221703.38 |
| 101 | 420362.03 | 2221703.19 |
| 102 | 420361.74 | 2221702.95 |
| 103 | 420361.49 | 2221702.65 |
| 104 | 420361.3  | 2221702.32 |
| 105 | 420361.17 | 2221701.96 |
| 106 | 420361.1  | 2221701.58 |
| 107 | 420361.1  | 2221701.25 |
| 108 | 420361.9  | 2221688.45 |
| 109 | 420349.24 | 2221599.95 |
| 110 | 420349.23 | 2221599.83 |
| 111 | 420349.23 | 2221599.45 |
| 112 | 420349.3  | 2221599.07 |
| 113 | 420349.43 | 2221598.71 |
| 114 | 420349.62 | 2221598.38 |
| 115 | 420349.86 | 2221598.08 |
| 116 | 420350.16 | 2221597.84 |
| 117 | 420350.41 | 2221597.69 |
| 118 | 420358.4  | 2221593.56 |
| 119 | 420355.52 | 2221572.24 |
| 120 | 420350.66 | 2221583.68 |
| 121 | 420350.44 | 2221584.08 |
| 122 | 420350.19 | 2221584.37 |
| 123 | 420349.9  | 2221584.62 |
| 124 | 420349.56 | 2221584.81 |
| 125 | 420349.2  | 2221584.94 |
| 126 | 420348.83 | 2221585.01 |
| 127 | 420348.44 | 2221585.01 |
| 128 | 420348.07 | 2221584.94 |
| 129 | 420347.71 | 2221584.81 |
| 130 | 420347.37 | 2221584.62 |
| 131 | 420347.08 | 2221584.37 |
| 132 | 420346.83 | 2221584.08 |
| 133 | 420346.64 | 2221583.75 |
| 134 | 420346.51 | 2221583.39 |
| 135 | 420346.44 | 2221583.01 |
| 136 | 420346.44 | 2221582.63 |
| 137 | 420346.51 | 2221582.25 |
| 138 | 420346.62 | 2221581.96 |
| 139 | 420351.97 | 2221569.34 |
| 140 | 420348.04 | 2221571.67 |
| 141 | 420347.85 | 2221571.78 |
| 142 | 420347.49 | 2221571.91 |
| 143 | 420347.11 | 2221571.97 |
| 144 | 420346.73 | 2221571.97 |
| 145 | 420346.35 | 2221571.91 |
| 146 | 420345.99 | 2221571.78 |
| 147 | 420345.66 | 2221571.58 |
| 148 | 420345.36 | 2221571.34 |
| 149 | 420345.12 | 2221571.04 |
| 150 | 420344.93 | 2221570.71 |
| 151 | 420344.79 | 2221570.35 |
| 152 | 420344.73 | 2221569.97 |
| 153 | 420344.73 | 2221569.59 |
| 154 | 420344.79 | 2221569.21 |
| 155 | 420344.93 | 2221568.85 |
| 156 | 420345.12 | 2221568.52 |
| 157 | 420345.36 | 2221568.23 |
| 158 | 420345.66 | 2221567.98 |
| 159 | 420345.8  | 2221567.9  |
| 160 | 420354.19 | 2221562.9  |
| 161 | 420347.39 | 2221524.92 |
| 162 | 420331.24 | 2221492.29 |
| 163 | 420309.64 | 2221504.2  |
| 164 | 420284.43 | 2221519.02 |
| 165 | 420257.18 | 2221535.72 |
| 166 | 420230.99 | 2221552.89 |
| 167 | 420230.71 | 2221553.04 |
| 168 | 420230.35 | 2221553.18 |
| 169 | 420229.97 | 2221553.24 |
| 170 | 420229.59 | 2221553.24 |
| 171 | 420229.21 | 2221553.18 |
| 172 | 420228.85 | 2221553.04 |
| 173 | 420228.52 | 2221552.85 |
| 174 | 420228.23 | 2221552.61 |
| 175 | 420227.98 | 2221552.31 |
| 176 | 420227.79 | 2221551.98 |
| 177 | 420227.66 | 2221551.62 |
| 178 | 420227.59 | 2221551.24 |
| 179 | 420227.59 | 2221550.86 |
| 180 | 420227.66 | 2221550.48 |

| 1   | 2         | 3          |
|-----|-----------|------------|
| 181 | 420227.79 | 2221550.12 |
| 182 | 420227.98 | 2221549.79 |
| 183 | 420228.23 | 2221549.5  |
| 184 | 420228.52 | 2221549.25 |
| 185 | 420254.79 | 2221532.02 |
| 186 | 420282.15 | 2221515.26 |
| 187 | 420307.44 | 2221500.39 |
| 188 | 420330.64 | 2221487.6  |
| 189 | 420346.84 | 2221462.01 |
| 190 | 420346.89 | 2221461.93 |
| 191 | 420347.14 | 2221461.64 |
| 192 | 420347.43 | 2221461.39 |
| 193 | 420347.57 | 2221461.31 |
| 194 | 420361.7  | 2221452.8  |
| 195 | 420378.79 | 2221442.71 |
| 196 | 420370.23 | 2221417.41 |
| 197 | 420370.19 | 2221417.27 |
| 198 | 420370.17 | 2221417.17 |
| 199 | 420364.28 | 2221390.02 |
| 200 | 420364.24 | 2221389.75 |
| 201 | 420364.24 | 2221389.36 |
| 202 | 420364.3  | 2221388.98 |
| 203 | 420364.44 | 2221388.62 |
| 204 | 420364.63 | 2221388.29 |
| 205 | 420364.87 | 2221388    |
| 206 | 420365.17 | 2221387.75 |
| 207 | 420365.5  | 2221387.56 |
| 208 | 420365.86 | 2221387.43 |
| 209 | 420366.24 | 2221387.36 |
| 210 | 420366.62 | 2221387.36 |
| 211 | 420367    | 2221387.43 |
| 212 | 420367.36 | 2221387.56 |
| 213 | 420367.69 | 2221387.75 |
| 214 | 420367.99 | 2221388    |
| 215 | 420368.23 | 2221388.29 |
| 216 | 420368.42 | 2221388.62 |
| 217 | 420368.55 | 2221388.98 |
| 218 | 420368.57 | 2221389.09 |
| 219 | 420374.44 | 2221416.12 |
| 220 | 420382.65 | 2221440.4  |
| 221 | 420399.33 | 2221430.42 |
| 222 | 420415.2  | 2221421.1  |
| 223 | 420409.86 | 2221397.1  |
| 224 | 420409.82 | 2221396.81 |
| 225 | 420409.82 | 2221396.43 |
| 226 | 420409.89 | 2221396.05 |
| 227 | 420410.02 | 2221395.69 |
| 228 | 420410.21 | 2221395.36 |
| 229 | 420410.45 | 2221395.06 |
| 230 | 420410.75 | 2221394.82 |
| 231 | 420411.08 | 2221394.63 |
| 232 | 420411.44 | 2221394.49 |
| 233 | 420411.82 | 2221394.43 |
| 234 | 420412.2  | 2221394.43 |
| 235 | 420412.58 | 2221394.49 |
| 236 | 420412.94 | 2221394.63 |
| 237 | 420413.27 | 2221394.82 |
| 238 | 420413.57 | 2221395.06 |
| 239 | 420413.81 | 2221395.36 |
| 240 | 420414    | 2221395.69 |
| 241 | 420414.14 | 2221396.05 |
| 242 | 420419.09 | 2221418.35 |
| 243 | 420429.27 | 2221410.57 |
| 244 | 420429.67 | 2221410.33 |
| 245 | 420446.98 | 2221403.04 |
| 246 | 420447.26 | 2221402.95 |
| 247 | 420447.64 | 2221402.88 |
| 248 | 420448.02 | 2221402.88 |
| 249 | 420448.4  | 2221402.95 |
| 250 | 420448.76 | 2221403.08 |
| 251 | 420449.09 | 2221403.27 |
| 252 | 420449.38 | 2221403.51 |
| 253 | 420449.63 | 2221403.81 |
| 254 | 420449.82 | 2221404.14 |
| 255 | 420449.95 | 2221404.5  |
| 256 | 420450.02 | 2221404.88 |
| 257 | 420450.02 | 2221405.26 |
| 258 | 420449.95 | 2221405.64 |
| 259 | 420449.82 | 2221406    |
| 260 | 420449.63 | 2221406.33 |
| 261 | 420449.38 | 2221406.63 |
| 262 | 420449.09 | 2221406.87 |
| 263 | 420448.76 | 2221407.06 |
| 264 | 420433.33 | 2221413.56 |
| 265 | 420439.79 | 2221433.1  |
| 266 | 420439.83 | 2221433.22 |
| 267 | 420439.89 | 2221433.6  |
| 268 | 420439.89 | 2221433.98 |
| 269 | 420439.83 | 2221434.36 |
| 270 | 420439.7  | 2221434.72 |

| 1   | 2         | 3          |
|-----|-----------|------------|
| 271 | 420439.51 | 2221435.05 |
| 272 | 420439.26 | 2221435.34 |
| 273 | 420438.96 | 2221435.59 |
| 274 | 420438.63 | 2221435.78 |
| 275 | 420438.37 | 2221435.88 |
| 1   | 420437.89 | 2221438.82 |
|     |           |            |
| 276 | 420421.64 | 2221421.94 |
| 277 | 420429.48 | 2221415.94 |
| 278 | 420433.8  | 2221428.98 |
| 276 | 420421.64 | 2221421.94 |
|     |           |            |
| 279 | 420436.48 | 2221441.1  |
| 280 | 420436.72 | 2221441.22 |
| 281 | 420436.85 | 2221441.34 |
| 282 | 420436.96 | 2221441.47 |
| 283 | 420437.05 | 2221441.62 |
| 284 | 420437.11 | 2221441.79 |
| 285 | 420437.14 | 2221441.96 |
| 286 | 420437.14 | 2221442.13 |
| 287 | 420437.11 | 2221442.3  |
| 288 | 420437.05 | 2221442.47 |
| 289 | 420436.96 | 2221442.62 |
| 290 | 420436.85 | 2221442.75 |
| 291 | 420436.72 | 2221442.86 |
| 292 | 420436.57 | 2221442.95 |
| 293 | 420436.4  | 2221443.01 |
| 294 | 420436.23 | 2221443.04 |
| 295 | 420436.06 | 2221443.04 |
| 296 | 420435.88 | 2221443.01 |
| 297 | 420432.01 | 2221441.62 |
| 298 | 420445.91 | 2221468.57 |
| 299 | 420456.04 | 2221484.72 |
| 300 | 420468.7  | 2221482.58 |
| 301 | 420486.55 | 2221478.95 |
| 302 | 420486.79 | 2221478.92 |
| 303 | 420487.18 | 2221478.92 |
| 304 | 420487.56 | 2221478.98 |
| 305 | 420487.92 | 2221479.11 |
| 306 | 420488.25 | 2221479.31 |
| 307 | 420488.54 | 2221479.55 |
| 308 | 420488.79 | 2221479.85 |
| 309 | 420488.98 | 2221480.18 |
| 310 | 420489.11 | 2221480.54 |
| 311 | 420489.18 | 2221480.92 |
| 312 | 420489.18 | 2221481.3  |
| 313 | 420489.11 | 2221481.68 |
| 314 | 420488.98 | 2221482.04 |
| 315 | 420488.79 | 2221482.37 |
| 316 | 420488.54 | 2221482.66 |
| 317 | 420488.25 | 2221482.91 |
| 318 | 420487.92 | 2221483.1  |
| 319 | 420487.56 | 2221483.23 |
| 320 | 420487.42 | 2221483.26 |
| 321 | 420469.54 | 2221486.9  |
| 322 | 420458.46 | 2221488.77 |
| 323 | 420468.3  | 2221505.63 |
| 324 | 420483.58 | 2221526.6  |
| 325 | 420483.8  | 2221526.97 |
| 326 | 420483.93 | 2221527.33 |
| 327 | 420484    | 2221527.71 |
| 328 | 420485.63 | 2221556.53 |
| 329 | 420490.54 | 2221587.64 |
| 330 | 420490.56 | 2221587.79 |
| 331 | 420490.56 | 2221588.17 |
| 332 | 420490.49 | 2221588.55 |
| 333 | 420490.36 | 2221588.91 |
| 334 | 420490.17 | 2221589.24 |
| 335 | 420489.92 | 2221589.53 |
| 336 | 420489.63 | 2221589.78 |
| 337 | 420489.29 | 2221589.97 |
| 338 | 420488.93 | 2221590.1  |
| 339 | 420488.56 | 2221590.17 |
| 340 | 420488.17 | 2221590.17 |
| 341 | 420487.8  | 2221590.1  |
| 342 | 420487.43 | 2221589.97 |
| 343 | 420487.1  | 2221589.78 |
| 344 | 420486.81 | 2221589.53 |
| 345 | 420486.56 | 2221589.24 |
| 346 | 420486.37 | 2221588.91 |
| 347 | 420486.24 | 2221588.55 |
| 348 | 420486.2  | 2221588.32 |
| 349 | 420481.26 | 2221557.1  |
| 350 | 420481.25 | 2221556.95 |
| 351 | 420479.65 | 2221528.67 |
| 352 | 420464.68 | 2221508.13 |
| 353 | 420464.57 | 2221507.94 |
| 354 | 420453.07 | 2221488.27 |
| 355 | 420442.13 | 2221470.83 |
| 356 | 420442.05 | 2221470.67 |
| 357 | 420426.35 | 2221440.24 |
| 358 | 420426.18 | 2221439.8  |
| 359 | 420426.12 | 2221439.43 |
| 360 | 420426.12 | 2221439.04 |